

SITE BENCHMARK

STATEWIDE LAND SURVEYING CONTROL POINT NO. GP22
A MAGNITUDE SET IN ASPHALT PARKING LOT NEAR THE SOUTH
CORNER OF THE SITE. AS SHOWN HEREON. ELEVATION WAS
DERIVED FROM A 2 HOUR GPS OBSERVATION WITH AN OPUS
SOLUTION. ELEVATION OF THE MARK IS 108.59

VICINITY MAP

NOT TO SCALE



SITE
CHEVRON SITE NO. 306561
2102 67th AVE. NE
ARLINGTON, WASHINGTON 98223

HORIZONTAL DATUM

WASHINGTON STATE PLANE COORDINATE SYSTEM
NAD 83 NORTH ZONE 4601, IN U.S. SURVEY FEET.

UTM ZONE

ZONE 10

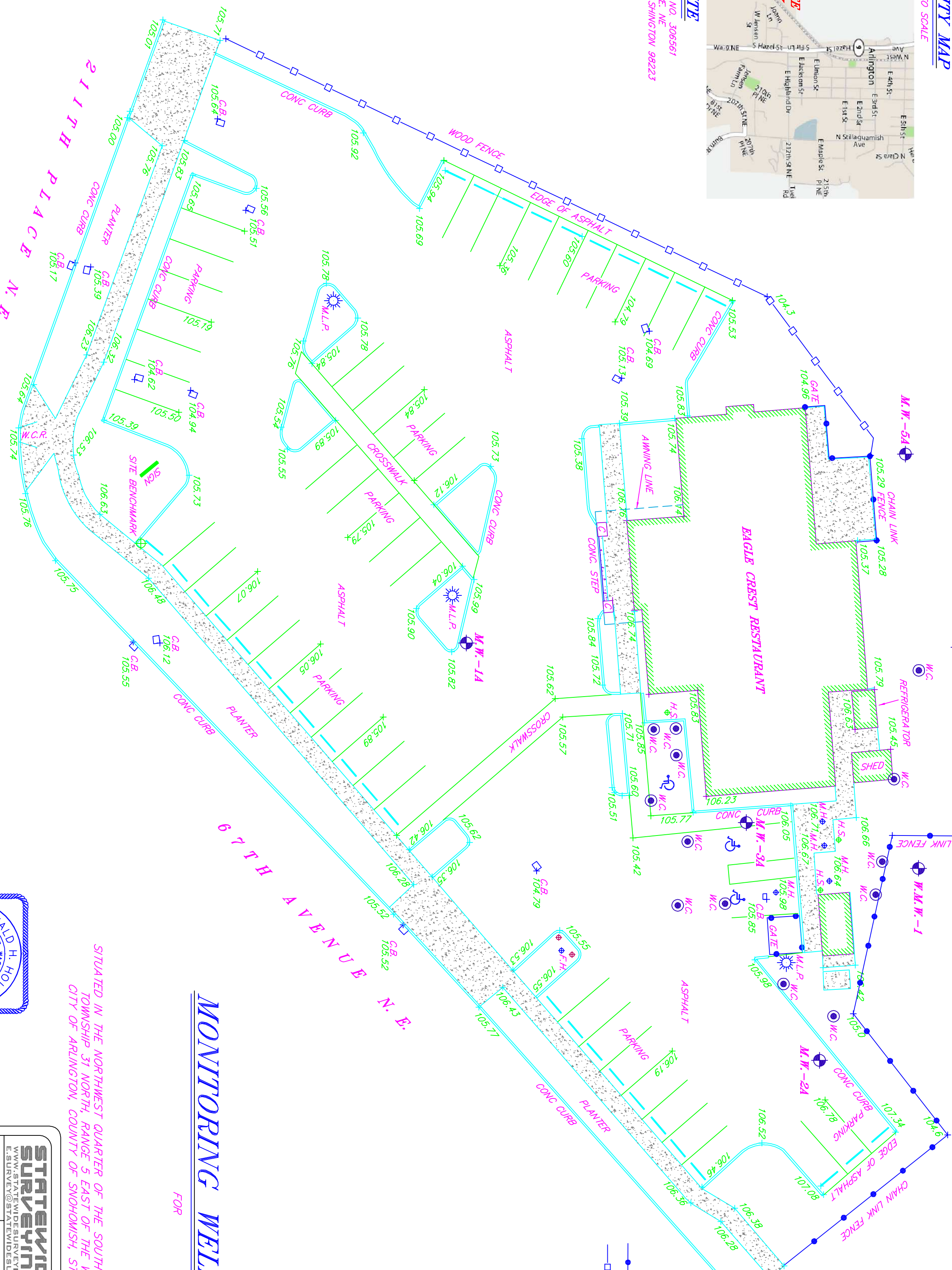
VERTICAL DATUM

NAVD 88, US SURVEY FEET

QUAD MAP

ARLINGTON WEST

SCALE: 1" = 20'



LEGEND

- = MONITORING WELL AS NOTED
- = SITE BENCHMARK AS NOTED.
- = WELL CASING
- = CHAIN LINK FENCE
- = WOOD FENCE
- = GUARD POST
- = +0.00 = SURFACE ELEVATION
- = C = COLUMN.
- = C.B. = CATCH BASIN.
- = CONG. = CONCRETE
- = F.H. = FIRE HYDRANT
- = H.S. = HANDICAP SIGN
- = M.L.P. = METAL LIGHT POLE.
- = M.H. = MANHOLE
- = W.C.R. = WHEEL CHAIR RAMP.
- = M.W. = MONITORING WELL.
- = W.C.R. = WHEEL CHAIR RAMP.
- = W.C. = WELL CASING
- = CONCRETE.

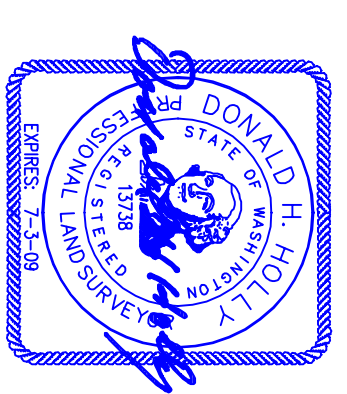
MONITORING WELL SURVEY

FOR

SITUATED IN THE NORTHWEST QUARTER OF THE SOUTHWEST QUARTER OF SECTION 11,
TOWNSHIP 31 NORTH, RANGE 5 EAST OF THE WILLAMETTE MERIDIAN,
CITY OF ARLINGTON, COUNTY OF SNOHOMISH, STATE OF WASHINGTON.

COORDINATE LISTING

211TH PLACE N.E.
67TH AVENUE N.E.



STATEWIDE LAND SURVEYING INC. SWS	
WWW.STATEWIDESURVEYING.COM E.SURVEY@STATEWIDESURVEYING.COM	
DRAWN	DATE
J.M.C.	01/24/08
CHECKED	DATE
D.H.H.	01/25/08
SCALE	SHEET
1" = 20'	1 OF 1
PROJECT NO. 2008-05	
227 N. MAIN AVE. GRESHAM, OR 97030 (P) 503.665.7988 (D) 503.665.7777	