

PROPERTY LINE ADJUSTMENT

FOR
JEFF FISH

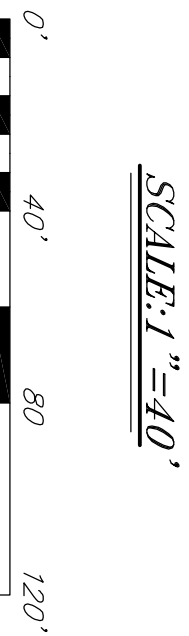
SITUATED IN SOUTHEAST QUARTER OF SECTION 31
TOWNSHIP 1 NORTH, RANGE 2 EAST, OF THE WILLAMETTE MERIDIAN,
CITY OF PORTLAND, MULTNOMAH COUNTY, STATE OF OREGON.

BASIS OF BEARING

HELD A BRASS SCREW FOUND 4.00 FEET WEST OF THE SOUTHWEST CORNER OF LOT 1 TO A FOUND 3/4" IRON PIPE MARKING THE SOUTHEAST CORNER OF LOT 11. HELD RECORD BEARING OF N 90°00'00" E FROM (S4).

MULTNOMAH COUNTY
SURVEY RECORDS

DATE FILED _____
REGISTER NUMBER _____



SCALE: 1" = 40'

NOTES
1) SUBJECT TO CITY OF PORTLAND CASE FILE NUMBER 2007-154581 PR

REFERENCE SURVEYS

- (S1) = S.N. 2182
- (S2) = S.N. 20921
- (S3) = S.N. 12283
- (S4) = S.N. 58086
- (S5) = S.N. 8887
- (S6) = S.N. 2672
- (S7) = S.N. 8051
- (S8) = S.N. 5141

REFERENCE PLATS

(P1) = MOUNT TABOR PLACE ADD. TO EAST PORTLAND, RECORDED BOOK 151 PAGE 3 MULTNOMAH COUNTY PLAT RECORDS

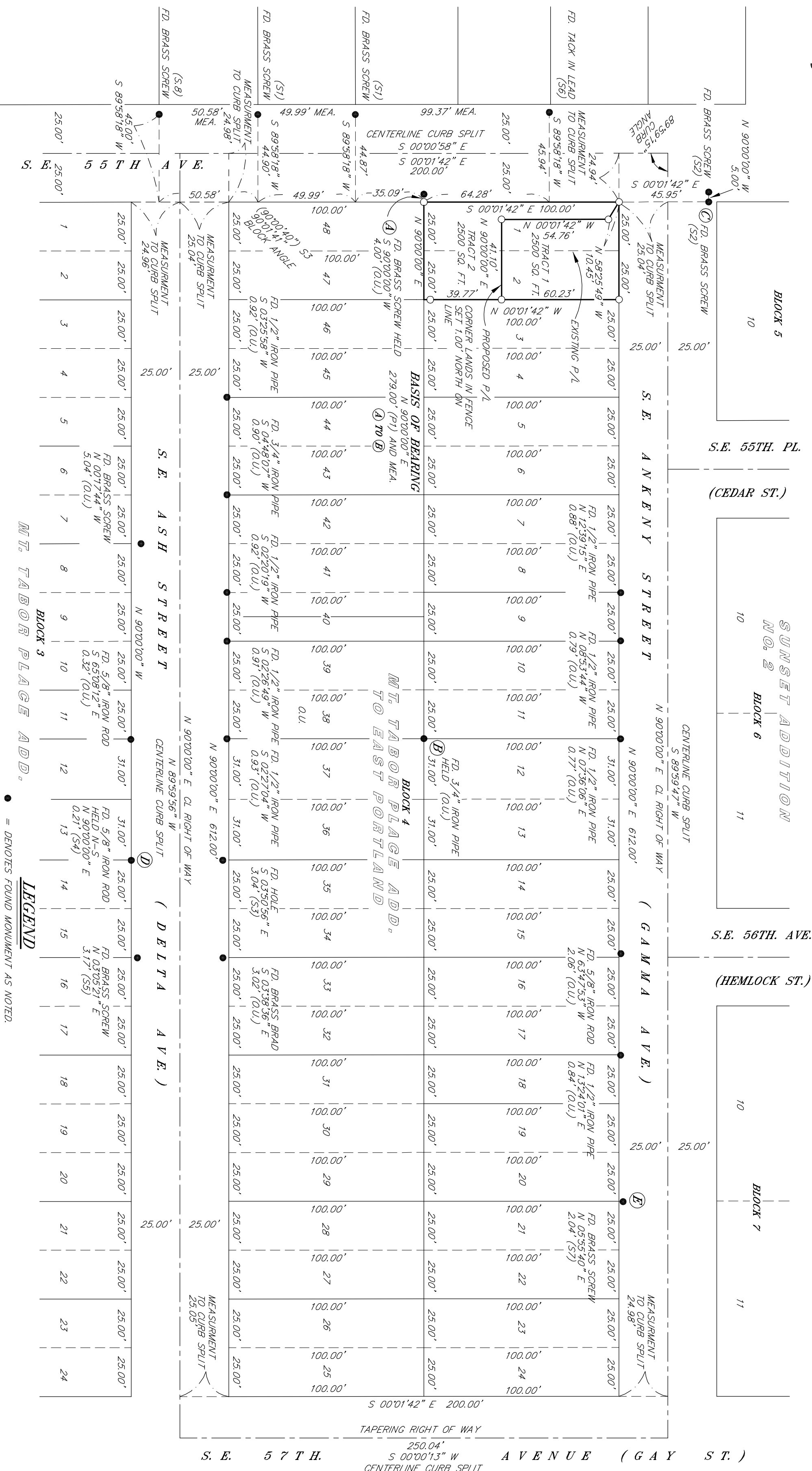
REFERENCE DEEDS

DOC. NO. 2007-089520, MULTNOMAH COUNTY DEED RECORDS

REGISTERED
PROFESSIONAL
LAND SURVEYOR

JAN. 23, 1990
RANDY W. ENGELGAU
2423
EXPIRES: 12/31/09

I CERTIFY THAT THIS PLAT WAS PREPARED USING H.P. PRODUCT #516454 ON CONVENTIONAL #RPC 4M2 MYLAR



NARRATIVE

- 1) THE PURPOSE OF THE SURVEY IS TO ESTABLISH THE BOUNDARY LINES AND ADJUST THE PROPERTY LINES BETWEEN LOTS 1 AND 2, BLOCK 4, MT TABOR PLACE ADDITION TO EAST PORTLAND.
- 2) THE SURVEY WAS BEGUN BY RECOVERING SEVERAL MONUMENTS ON THE NORTH, WEST, AND SOUTH SIDE OF BLOCK 4 AS SHOWN. BETWEEN THE NORTH SIDE OF THE BLOCK AND THE SOUTH SIDE OF THE BLOCK MOST MONUMENTATION SHOWED A 1.50 PLUS FOOT EXCESS FROM PLAT. TO HELP DETERMINE THE ORIGINAL POSITION OF THE BLOCK WE RETURNED TO THE BLOCK AND SPILT THE CURBS AS SHOWN. AFTER REVIEWING THE CURB SPLITS AND MONUMENTATION, NO EXCESS EXISTED.
- 3) I HELD (A) TO (Q) AS MY BASIS OF BEARING (N 90°00'00" E) AS PER S.N. 58086 (S4). BY HOLDING THE NORTH/SOUTH POSITION OF (A) AND (Q), I FOUND (B) AND (C) TO BE CLOSE TO RECORD POSITION NORTH/SOUTH. I HELD (A) AS A POINT 4.00 FEET WEST OF THE S.W. CORNER OF LOT 1, FROM THIS CALCULATED POSITION I HELD A LINE TO (C) AS THE EAST RIGHT-OF-WAY LINE AND THE WEST LINE OF LOT 1. I HELD (Q) AS A POINT 4.00 FEET WEST OF THE S.W. CORNER OF LOT 1, FROM THE S.W. CORNER OF LOT 1, I HELD PARALLEL WITH (A) - (Q) AND PLAT DISTANCE TO THE N.E. CORNER OF LOT 2. FROM THE N.E. CORNER OF LOT 2, I HELD PARALLEL WITH THE WEST LINE OF LOT 1 AND PLAT DISTANCE TO THE S.E. CORNER OF LOT 2.
- 4) I THEN ADJUSTED THE PROPERTY LINE PER CITY OF PORTLAND CASE FILE NO. 2007-154581 PR...
- 5) ALL OTHER MONUMENTS ARE AS SHOWN.

MT. TABOR PLACE ADD.

DELTA AVE.

LEGEND

- = DENOTES FOUND MONUMENT AS NOTED.
- = DENOTES A 5/8" X 30" IRON ROD WITH YELLOW PLASTIC CAP MARKED "S. W.L.S. INC. 503-665-7777", SET ON DECEMBER 21, 2007
- = FOUND
- CL = CENTERLINE
- (O.U.) ORIGIN UNKNOWN
- () = RECORD INFORMATION AS REFERENCED
- MEAS. = MEASURE
- S.N. = SURVEY NUMBER MULTNOMAH COUNTY SURVEY RECORDS
- SQ. FT. = SQUARE FEET
- DOC. NO. = DOCUMENT NUMBER
- P/L = PROPERTY LINE

STATEWIDE LAND SURVEYING INC. SWS

227 N. MAIN AVE.
GRESHAM, OR 97030
(P) 503.665.7988
(D) 503.665.7777

DATE 10/07/07
DATE 10/15/07

SCALE 1" = 40'

SHEET 1 OF 1

PROJECT NO. 2007-56