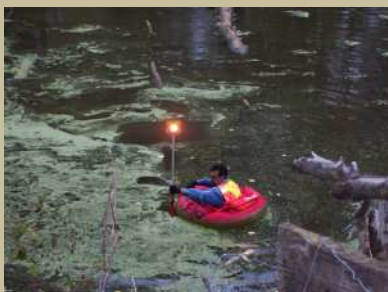


# STATEMENT OF QUALIFICATIONS



STATEWIDE LAND SURVEYING INC.

A DISABLED VETERAN OWNED SMALL BUSINESS



227 NORTH MAIN AVENUE  
GRESHAM, OREGON 97030  
PHONE: 503-665-7777  
FAX: 503-665-7988  
E-MAIL:  
SURVEY@STATEWIDESURVEYING.COM  
WEBSITE:  
WWW.STATEWIDESURVEYING.COM

## WHERE PRECISION DELIVERS SOLUTIONS

STATEWIDE LAND SURVEYING INC. DELIVERS THE HIGHEST QUALITY SOLUTIONS TO HOMEOWNERS, CONTRACTORS, ARCHITECTS, AND ENGINEERS IN BOTH OREGON AND WASHINGTON. AND THEY DO IT WITH PERSONALIZED SERVICE – SOMETHING HARD TO FIND IN TODAY'S BUSY WORLD – IN THE TIMEFRAME YOU DEMAND. USING THE LATEST TECHNOLOGY AND STATE-OF-THE-ART SOFTWARE, COMBINED WITH IN-DEPTH KNOWLEDGE AND MORE THAN 35 YEARS OF EXPERIENCE, STATEWIDE ENSURES YOU RECEIVE THE MOST ACCURATE SURVEY POSSIBLE.

STATEWIDE PRIDES THEMSELVES ON THE SCIENCE OF PRECISION SURVEYING AND THE ART OF CLEAR COMMUNICATION, BOTH WITH YOU AND AMONG THEIR STAFF. THEIR QUALITY CONTROL SYSTEM GUARANTEES THE DRAWINGS PRODUCED BY THEIR TALENTED TEAM IN THE OFFICE ARE AN ACCURATE REFLECTION OF THE INFORMATION COLLECTED BY THEIR EXPERTS IN THE FIELD. AT STATEWIDE THEY BELIEVE IT'S THEIR JOB TO KNOW THE DETAILS – SO YOU DON'T HAVE TO.

WHETHER YOU NEED TO RESOLVE A PROPERTY LINE ISSUE OR ARE GETTING READY TO START A LARGE CONSTRUCTION PROJECT, STATEWIDE LAND SURVEYING INC. HAS THE EXPERTISE YOU NEED. THEIR WORK SITE PERSONNEL HOLD CERTIFICATIONS IN HAZARDOUS MATERIAL HANDLING AND SAFETY OPERATIONS. THEY GET THE JOB DONE RIGHT THE FIRST TIME, ON TIME.



---

#### LICENSED SURVEYORS

RANDY ENGELGAU, PLS.

DON HOLLY, PLS.

---



---

#### CERTIFICATIONS

THE WORK SITE PERSONNEL HAVE COMPLETED TRAINING IN THE FOLLOWING PROGRAMS:

API WORKSAFE

LOSS PREVENTION SYSTEM (LPS) TRAINING

OSHA HAZARDOUS WASTE OPERATIONS AND EMERGENCY RESPONSE (40 HOUR TRAINING)

## SUMMARY OF FIRM QUALIFICATIONS

STATEWIDE LAND SURVEYING INC. IS AN EMERGING SMALL BUSINESS (ESB # 4340) OWNED AND OPERATED BY RANDY W. ENGELGAU, A DISABLED VETERAN. HE HAS A LONG STANDING REPUTATION IN OREGON AS A PROFESSIONAL LAND SURVEYOR AND BUSINESS OWNER. IT IS STATEWIDE LAND SURVEYING'S GOAL TO BUILD UPON THIS REPUTATION AND DELIVER PREMIUM SERVICE IN ALL ASPECTS OF THE SURVEYING FIELD.

## SERVICES PROVIDED

STATEWIDE LAND SURVEYING INC. PROVIDES SURVEYING FOR BOTH PUBLIC AND PRIVATE CLIENTS. OUR TEAM HAS VALUABLE EXPERIENCE IN THE FOLLOWING TYPES OF PROJECTS:

- ALTA/ACSM LAND TITLE SURVEYS
- BOUNDARY SURVEYS
- CONSTRUCTION SURVEYS
- EASEMENT WRITING
- ENVIRONMENTAL SURVEYS
- G.P.S. SURVEYS
- HYDROGRAPHIC SURVEYS
- SUBDIVISION AND CONDOMINIUM PLATS
- TOPOGRAPHIC SURVEYS

## INSURANCE

FOR THE PROTECTION OF OUR CLIENTS, STATEWIDE LAND SURVEYING INC. HOLDS BOTH ERRORS AND OMISSIONS INSURANCE AND GENERAL LIABILITY INSURANCE.

OUR ERRORS AND OMISSION INSURANCE POLICY IS WRITTEN FOR THE AMOUNT OF \$1,000,000,

OUR GENERAL LIABILITY INSURANCE POLICY IS WRITTEN FOR THE AMOUNT OF \$2,000,000.



## EQUAL OPPORTUNITY EMPLOYER

STATEWIDE IS AN EQUAL OPPORTUNITY EMPLOYER, PRACTICING FAIR HIRING PROCEDURES AND SEEKING QUALIFIED MINORITY AND WOMEN EMPLOYEES. STATEWIDE MAINTAINS A POLICY OF EQUAL EMPLOYMENT WITHOUT REGARD TO RACE, CREED, COLOR, SEX, MARITAL STATUS, SEXUAL ORIENTATION, RELIGION, NATIONAL ORIGIN, SENSORY, MENTAL, OR PHYSICAL HANDICAP, VETERAN STATUS, POLITICAL AFFILIATION, AND ALL OTHER BASIS OF DISCRIMINATION PROHIBITED BY LOCAL, STATE, AND FEDERAL LAW.

**ALTA/ACSM SURVEY**

A SURVEYING STANDARD JOINTLY PROPOSED BY THE AMERICAN LAND TITLE ASSOCIATION AND THE AMERICAN CONGRESS ON SURVEYING AND MAPPING THAT INCORPORATES ELEMENTS OF THE BOUNDARY SURVEY, MORTGAGE SURVEY, AND TOPOGRAPHIC SURVEY. ALTA/ACSM SURVEYS, FREQUENTLY SHORTENED TO ALTA SURVEYS, ARE OFTEN REQUIRED FOR REAL ESTATE TRANSACTIONS.

**PAST PROJECTS**

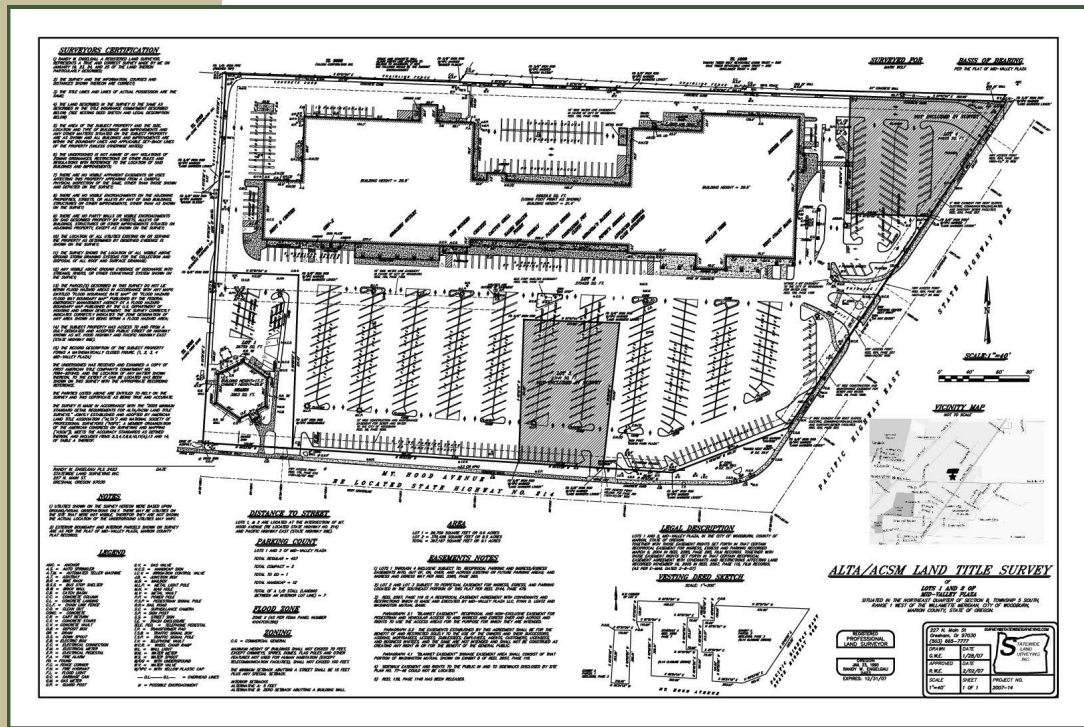
● **CITY OF GRESHAM  
FRED MEYER**

STATEWIDE COMPLETED A 6.5 ACRE ALTA/ACSM FOR THE CITY OF GRESHAM.

● **MID-VALLEY PLAZA LLC.  
WOODBURN, OREGON**

STATEWIDE COMPLETED A 10.2 ACRE SURVEY. THIS SURVEY INCLUDED THE FOLLOWING:

- VICINITY MAP
- FLOOD ZONE
- GROSS LAND AREA
- SETBACKS
- HEIGHT AND FLOOR SPACE RESTRICTIONS
- BUILDING HEIGHTS
- PARKING AREAS
- VISIBLE IMPROVEMENTS
- ACCESS TO PUBLIC WAY
- LOCATION OF UTILITIES
- NAMES OF ADJOINING OWNERS



MID-VALLEY PLAZA ALTA/ACSM



## CONSTRUCTION SURVEYS

THE PROCESS OF ESTABLISHING AND MARKING THE POSITION AND DETAILED LAYOUT OF NEW STRUCTURES SUCH AS ROADS AND BUILDINGS FOR SUBSEQUENT CONSTRUCTION. CONSTRUCTION STAKING DATA PROVIDES HORIZONTAL AND VERTICAL INFORMATION NECESSARY FOR SURFACE DRAINS OR THE PIPE FLOW FOR MOST URBAN, RURAL OR SUBURBAN SETTING.

## PAST PROJECTS

### ● **TURNER CONSTRUCTION** **SACRED HEART MEDICAL CENTER**

AT STATEWIDE, WE PERFORM A NUMBER OF CONSTRUCTION SURVEYS EACH YEAR. WITH OUR FIELD PROCEDURES AND STATE-OF-THE-ART SOFTWARE, WE BELIEVE THAT WE PROVIDE SOME OF THE MOST QUALITY CONTROL SURVEYS IN OUR AREA. FOR THE LAST TWO YEARS, STATEWIDE LAND SURVEYING HAS BEEN HANDLING ALL THE SURVEYING NEEDS FOR TURNER CONSTRUCTION AT SACRED HEART HOSPITAL IN EUGENE, OREGON. OUR CREW HAS BEEN ON SITE FOR EIGHT HOURS A DAY, FIVE DAYS A WEEK. THIS REQUIRES OUTSTANDING COMMUNICATION BETWEEN OUR FIELD CREW AND OFFICE LOCATED IN GRESHAM, OREGON.



### HYDROGRAPHIC SURVEY

A SURVEY CONDUCTED WITH THE PURPOSE OF MAPPING THE GROUND BENEATH A BODY OF WATER.

## PAST PROJECTS

OUR CREWS HAS PERFORMED MULTIPLE HYDROGRAPHIC SURVEYS FOR THE CORPS OF ENGINEERS. WORKING ON THE COLUMBIA RIVER TREATY FISHING ACCESS SITES, WHERE OVER THREE MILES OF RIVER SOUNDINGS WERE TAKEN FOR THE DESIGN OF FISHING DOCKS AND BOAT RAMPS.



STATEWIDE CAN PROVIDE SERVICES USING BOTH A 21 FOOT JET BOAT FOR LARGER BODIES OF WATER, OR A 16 FOOT DRIFT BOAT FOR SMALLER BODIES OF WATER.

# PAST PROJECTS

## SUBDIVISION AND CONDOMINIUM PLAT

A PLOT OR MAP BASED ON A SURVEY OF A PARCEL OF LAND. LINES ARE DRAWN INSIDE IT, INDICATING THE LOCATION OF ROADS AND LOTS. PLATS ARE USUALLY DISCUSSED BACK AND FORTH BETWEEN THE DEVELOPER AND THE SURVEYOR UNTIL THEY ARE AGREED UPON, AT WHICH POINT PINS ARE DRIVEN INTO THE GROUND TO MARK THE LOT CORNERS AND CURVE ENDS, AND THE PLAT IS RECORDED IN THE COUNTY WHERE THE IT RESIDES.



- **LADD'S CONDOMINIUMS  
PORTLAND, OREGON**
- **RIDGECREST SUBDIVISION  
ST. HELENS, OREGON**
- **THREE CEDARS CONDOMINIUMS  
GRESHAM, OREGON**





GPS SURVEY  
GLOBAL POSITIONING  
SYSTEMS

IS USED TO ESTABLISH  
PRECISE HORIZONTAL  
AND VERTICAL POSITION  
OF POINTS ON THE  
GROUND FOR THE USE IN  
BOUNDARY  
DETERMINATION,  
LOCATION OF MONITORING  
WELLS, CONTROL FOR  
AERIAL PHOTOGRAPHS,  
AND OTHER RELATED  
PURPOSES.



## PAST PROJECTS

- **MAUL FOSTER & ALONGI INC.**  
**FREIGHTLINER**  
**SWAN ISLAND**

HORIZONTALLY AND VERTICALLY CONTROLLED OVER 50 SOIL  
SAMPLE BORINGS.

- **CONESTOGA ROVER AND ASSOC.**  
**CHEVERON STATION SITES**  
**PORTLAND AND SEATTLE AREA**

SURVEYED TEN CHEVERON STATION SITES, MAPPING THE  
IMPROVEMENTS, AND ACCURATELY POSITIONING MONITORING  
WELLS ON EACH SITE.

---

STATEWIDE HAS USED GPS SURVEYS TO SUPPLEMENT  
CONVENTIONAL SURVEY METHODS WHEN NEEDED.  
ESTABLISHMENT OF BASELINES AND REFERENCE POINTS USING  
GPS EQUIPMENT SAVES CONSIDERABLE EFFORT OVER  
CONVENTIONAL METHODS WHEN SURVEYING LARGE AREAS, .  
THIS SURVEY METHOD CAN SAVE BOTH TIME AND MONEY.



# REFERENCE PAGE



- **CONESTOGA-ROVERS & ASSOCIATES (CRA)**  
ANDREA PETRUSKY  
1-425-212-5107



- **HAGGART LUXURY HOMES**  
JEFF HAGGART  
503-654-2030



- **HOWARD S. WRIGHT**  
GREG ELBERT  
503-220-0895



- **MAUL FOSTER AND ALONGI, INC.**  
TONY SILVA, R.G.  
971-544-2139



- **TURNER CONSTRUCTION**  
MARK SHUTZ  
541-988-7240
- **U.S. ARMY CORPS OF ENGINEERS**  
DAN HOESKTRA  
503-808-4362
- **THE WHITE HOUSE COLLECTION**  
RICHARD WHITE  
503-590-7425
- **ZCS ENGINEERING**  
TROY LYVER  
503-659-2205